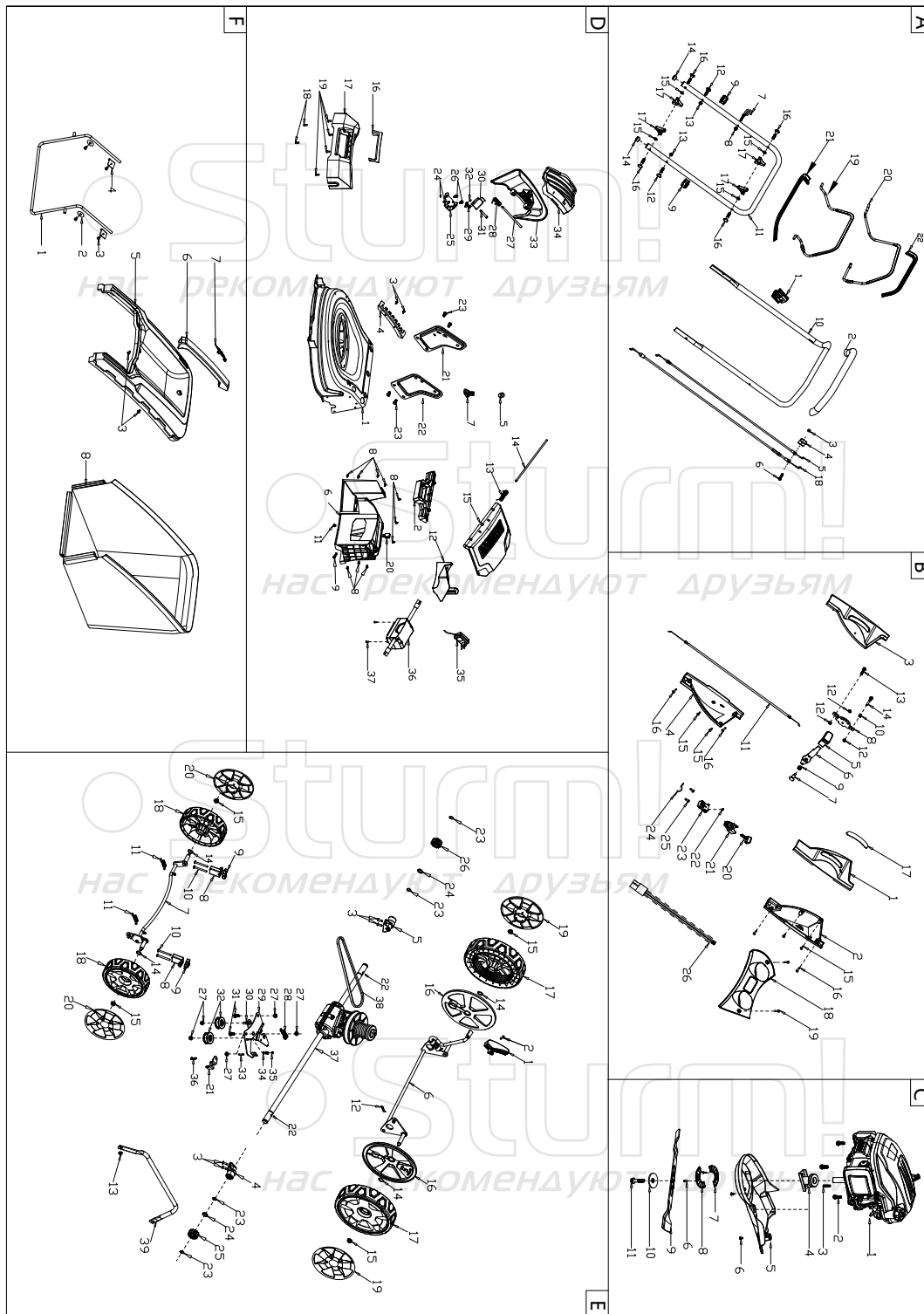


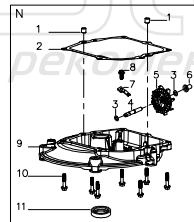
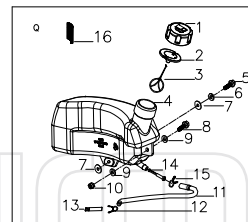
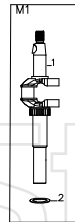
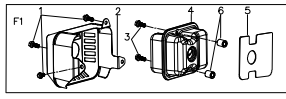
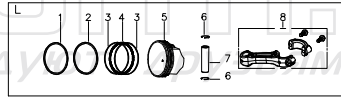
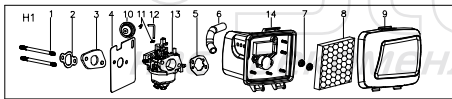
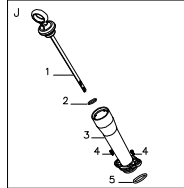
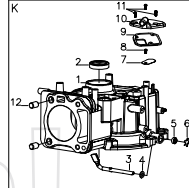
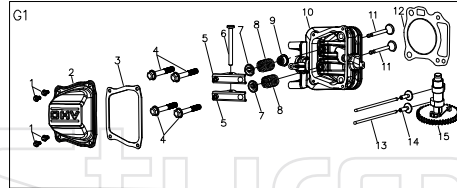
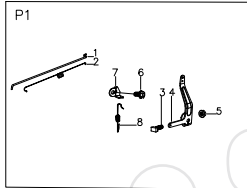
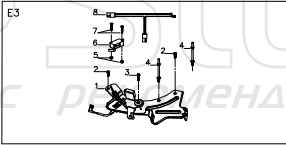
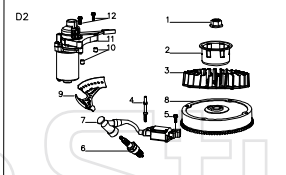
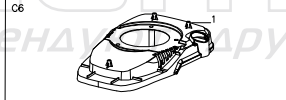
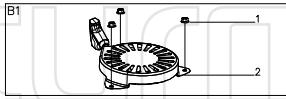
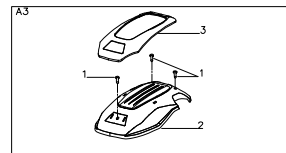
PL5117SVE

| No | Description | No | Description | No | Description |
|------|----------------------------|------|----------------------------|------|--------------------------|
| A-1 | Limiting Stopper | C-1 | Engine | E-1 | Height adjustment handle |
| A-2 | Foam Pipe | C-2 | Bolt | E-2 | Screw |
| A-3 | Nut | C-3 | Flat Key | E-3 | Screw |
| A-4 | Cable Fixing Clamp | C-4 | Blade adapter | E-4 | Left shaft sleeve |
| A-5 | Cable | C-5 | Belt Cover | E-5 | Right shaft sleeve |
| A-6 | Bolt | C-6 | Screw | E-6 | Rear wheel shaft |
| A-7 | Rope Guide | C-7 | Belt Cover Plate | E-7 | Front wheel shaft |
| A-8 | Nut | C-8 | Belt Cover Plate | E-8 | sleeve base |
| A-9 | Cable Support | C-9 | 20" Blade | E-9 | Fixed plate |
| A-10 | Upper Handle | C-10 | Blade Washer | E-10 | Bolt |
| A-11 | Lower handle | C-11 | Blade Bolt | E-11 | Spring |
| A-12 | Bolt | D-1 | Deck | E-12 | Split Pin |
| A-13 | Nut | D-2 | Rear Cover Pedestal | E-13 | Nut |
| A-14 | Handle Plug | D-3 | Screw | E-14 | Spring Washer |
| A-15 | Flat Washer | D-4 | Height adjustment plate | E-15 | Nut |
| A-16 | Bolt | D-5 | Cable Sleeve | E-16 | Inner cover |
| A-17 | Knob | D-6 | Back board | E-17 | 7inch wheel |
| A-18 | Clutch cabel | D-7 | Washing Linker | E-18 | 7inch wheel |
| A-19 | Brake Lever | D-8 | Screw | E-19 | 9inch wheel cover |
| A-20 | Clutch Lever | D-9 | Bolt | E-20 | 7inch wheel cover |
| A-21 | Plastic Decoration | D-11 | Nut | E-21 | Fixed plate |
| A-22 | Plastic Decoration | D-12 | Mulching Plug | E-22 | Pin |
| B-1 | Upper Cover of Left Panel | D-13 | Spring | E-23 | Lock Ring |
| B-2 | Lower Cover of Left Panel | D-14 | Rear Cover Shaft | E-24 | Flat Washer |
| B-3 | Upper Cover of Right Panel | D-15 | Rear cover | E-25 | Left Gear |
| B-4 | Lower Cover of Right Panel | D-16 | Front plate | E-26 | Right Gear |
| B-5 | Plastic Grip | D-17 | Front face | E-27 | Nut |
| B-6 | Operating Grip | D-18 | Screw | E-28 | Spring |
| B-7 | Screw | D-19 | Screw | E-29 | Plate |
| B-8 | Fixed Plate | D-20 | supporter | E-30 | Plate |
| B-9 | Spring | D-21 | Right Bracket | E-31 | Bolt |
| B-10 | Bush | D-22 | Right Bracket | E-32 | Idle pulley |
| B-11 | Cable | D-23 | Bolt | E-33 | Bolt |
| B-12 | Nut | D-24 | Nut | E-34 | Bearing |
| B-13 | Bolt | D-25 | Side Discharge Bracket | E-35 | Nut |
| B-14 | Bolt | D-26 | Bolt | E-36 | Bolt |
| B-15 | Screw | D-27 | Side Discharge Cover Shaft | E-37 | Gearbox |
| B-16 | Screw | D-28 | Spring | E-38 | Belt |
| B-17 | Handle Panel | D-29 | Spring | E-39 | connecting rod |
| B-18 | Handle Panel | D-30 | Cover Plate | F-1 | Metal Bracket |
| B-19 | Screw | D-31 | shaft | F-2 | Flat Washer |
| B-20 | Key | D-32 | Lock Ring | F-3 | Screw |
| B-21 | Key Holder | D-33 | Side Discharge | F-4 | fixed plate |
| B-22 | Button | D-34 | Side Discharge cover | F-5 | upper cover |
| B-23 | cover | D-35 | Charger | F-6 | Handle |
| B-24 | Cable Holder | D-36 | Battery pack | F-7 | Indicated Board |
| B-25 | Screw | D-37 | Screw | F-8 | Fabric bag |
| B-26 | Wire | | | | |

PL5117SVE-EX-RUS230914



ENGINE FOR PL5117SVE



| No | Description | No | Description | No | Description |
|-------|-------------------------------|-------|------------------------------------|------|------------------------------|
| A3-1 | Screw | G1-11 | Valve | L-7 | Piston Pin |
| A3-2 | Engine Cover | G1-12 | Seal Gasket | L-8 | Connecting Rod Assy |
| A3-3 | | G1-13 | Guide Board of Handspike | M1-1 | Crankshaft |
| B1-1 | Nut | G1-14 | Tappet | M1-2 | Gasket of Gear |
| B1-2 | Recoil start | G1-15 | Camshaft Assy | N-1 | Locating Pin of Crankcase |
| C6-1 | Blower Housing | H1-1 | Bolt | N-2 | Gasket of Crankcase |
| D2-1 | Nut | H1-2 | Paper Gasket of Inlet Pipe | N-3 | Washer |
| D2-2 | Start-up Hub | H1-3 | Air Inlet Pipe | N-4 | Circlip of Gear shaft |
| D2-3 | Fan | H1-4 | Paper Gasket of Carburetor | N-5 | Gear Shaft Assy |
| D2-4 | Bolt I | H1-5 | Gasket | N-6 | Sliding Sleeve |
| D2-5 | Bolt | H1-6 | Exhaust Pipe | N-7 | Gear Shaft Hold-down Plate |
| D2-6 | Spark plug | H1-7 | Nut | N-8 | Bolt |
| D2-7 | Ignition | H1-8 | Foam Filter Element | N-9 | Crankcase Cover |
| D2-8 | Flywheel | H1-9 | Air Filter Upper Cover | N-10 | Bolt |
| D2-9 | Back plate | H1-10 | Primer | N-11 | Oil Seal |
| D2-10 | Locating Pin of Crankcase | H1-11 | Circlip | P1-1 | Handspike of Valve |
| D2-11 | Starting Motor | H1-12 | Primer | P1-2 | Spring of Valve |
| D2-12 | Bolt | H1-13 | Carburetor | P1-3 | Bolt |
| E3-1 | Brake Assy | H1-14 | Air Filter Pedestal | P1-4 | Speed Regulator Rocker |
| E3-2 | Bolt | J-1 | Lubricating Gauge | P1-5 | Nut |
| E3-3 | Bolt | J-2 | "o" Ring $\phi 20 \times \phi 2.3$ | P1-6 | Bolt |
| E3-4 | Bolt II | J-3 | Lubricating Pipe Assy | P1-7 | Plate |
| E3-5 | Nut | J-4 | Screw | P1-8 | Spring |
| E3-6 | Switch | J-5 | "O" Ring $\phi 21 \times \phi 2.3$ | Q-1 | Fuel Tank Cap |
| E3-7 | Screw | K-1 | Crankcase | Q-2 | Seal Gasket of Fuel Tank Cap |
| E3-8 | Wire | K-2 | Oil Seal | Q-3 | Connecting Rope |
| F1-1 | Bolt | K-3 | Speed Regulator Rocker Spindle | Q-4 | Fuel Tank |
| F1-2 | | K-4 | Flat Washer | Q-5 | Bolt |
| F1-3 | Bolt | K-5 | Oil Seal | Q-6 | Spring washer |
| F1-4 | | K-6 | Springness Split Pin | Q-7 | Washer |
| F1-5 | Gasket of Muffler | K-7 | Valve Element | Q-8 | Bolt |
| F1-6 | | K-8 | Screw | Q-9 | Gasket |
| G1-1 | Bolt | K-9 | Gasket of Respirator Cover | Q-10 | Nut |
| G1-2 | Cylinder Head Cover | K-10 | Respirator Cover Plate | Q-11 | Oil Pipe |
| G1-3 | Gasket of Cylinder Head Cover | K-11 | Screw | Q-12 | Oil Pipe Circlip II |
| G1-4 | Bolt | K-12 | Locating Pin | Q-13 | Oil Pipe Fixing Clip |
| G1-5 | Rocker of Valve | L-1 | Piston Ring I | Q-14 | Filtering Net Duct of Fuel |
| G1-6 | pin | L-2 | Piston Ring II | Q-15 | Oil Pipe Circlip I |
| G1-7 | Spring Coil of outlet Valve | L-3 | Scraper Ring | Q-16 | Lubricate Filtering Net |
| G1-8 | Spring of Valve | L-4 | Bushing Ring | | |
| G1-9 | Oil Seal | L-5 | Piston | | |
| G1-10 | Cylinder Head Assy | L-6 | Spring | | |